

Exploring the Local Habitat Map

Why explore the map?

The Local Habitat Map shows where actions for nature (called measures) identified in the LNRS could be taken across **West Sussex** to deliver the greatest benefit for wildlife and the wider environment.

The map gives a sense of how and where nature could be recovered across the whole of the LNRS area to create more of our important habitats, or to make existing habitats bigger, better and more joined-up with each other. It also shows how this could fit around our existing protected sites for nature.

By checking the map, you can see if there are any measures on or near land that you might own, manage or advise on, which is useful if you're considering creating or restoring habitats to support nature's recovery.

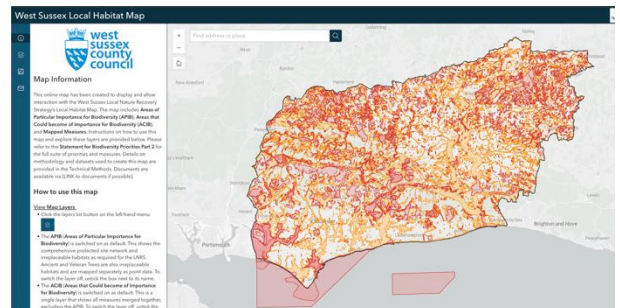
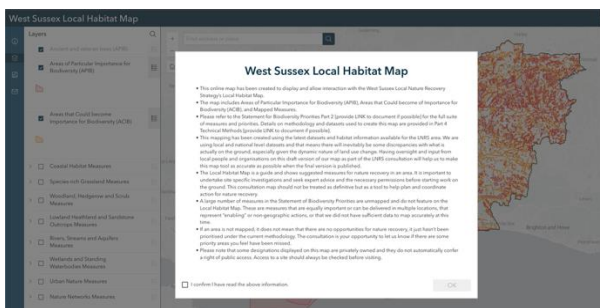
Note – there is no obligation to carry out any measure, mapped or otherwise.

Before you start

While you can access the Local Habitat Map from your mobile, we recommend doing so from a desktop or laptop as it is easier to navigate and has some additional functionality. Images in this factsheet are from a desktop. All the measures on the map (and others) are detailed in Part 2 of the written LNRS.

Get started - Access the map [here](#).

The first thing you'll see is a pop-up box with information about the data sources used to create the map and other caveats (image below left). Once you've read it, click the box in the bottom left hand corner to confirm this. The full map will then appear (image below right). This already has some of the map layers turned on.



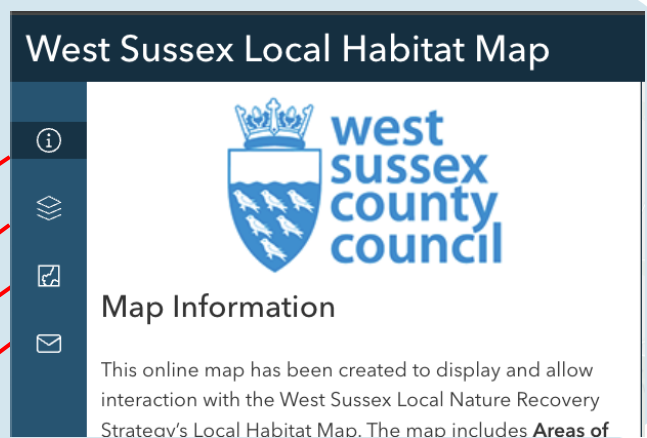
There are three categories of layer in the Local Habitat Map

- 1. Where protected and important sites for nature are located** i.e. designated sites and irreplaceable habitats. Ancient and veteran trees can also be switched on/off as part of this. This layer is known as the *APIB – Areas of Particular Importance for Biodiversity*. It is switched on when you first open the map.
- 2. Individual measures (actions for nature) grouped by habitat** e.g. measures relating to woodland habitats, urban, grassland, coastal etc). These are switched off when you open the map.
- 3. A single layer with all measures merged together**, excluding the area covered by the APIB. This is called the *ACIB – Areas that Could become of Importance for Biodiversity*. It is switched on when you open the map.

Navigating the map

In the top lefthand corner, there are four icons.

- Information
- Map Layers
- Background Map
- Add a comment



Click on the second icon to see a list of the map layers.

Here you can turn default layers off and turn on any layers that are of interest. In the example below, the *APIB* and *ACIB* have been switched off, and *Species-rich Grassland Measures* has been selected.

Clicking on the arrow to the left of the habitat category brings a dropdown list of individual measures (in this case G1.1 to G1.5). You can turn individual measures within a habitat category on and off. When on, the coloured areas of the map show the locations where implementing the measure can have the greatest benefit for nature.

Layer Name	Checked
Ancient and veteran trees (APIB)	<input checked="" type="checkbox"/>
Areas of Particular Importance for Biodiversity (APIB)	<input type="checkbox"/>
Areas that Could become Importance for Biodiversity (ACIB)	<input type="checkbox"/>
Coastal Habitat Measures	<input type="checkbox"/>
Species-rich Grassland Measures	<input checked="" type="checkbox"/>
Woodland, Hedgerow and Scrub Measures	<input type="checkbox"/>
Lowland Heathland and Sandstone Outcrops Measures	<input type="checkbox"/>
Rivers, Streams and Aquifers Measures	<input type="checkbox"/>

Measure Name	Checked
Species-rich Grassland Measures	<input type="checkbox"/>
G1.1 Enhance chalk grassland	<input checked="" type="checkbox"/>
G1.2 Create new chalk grassland	<input checked="" type="checkbox"/>
G1.3 Enhance species-rich grassland in HWNL	<input checked="" type="checkbox"/>
G1.4 Create new species-rich grassland in HWNL	<input checked="" type="checkbox"/>
G1.5 Enhance waxcap grassland	<input checked="" type="checkbox"/>

Access details about a measure

Click on a measure on the map (the coloured area) to bring up a box of further information, which has:

- The Measure Code (e.g. *G1.1 Enhance chalk grassland*)
- Some guidance about how to implement it
- Species Assemblages (which group of priority species are associated with the measure (e.g. *Chalk grassland assemblage*))

Note: If more than one measure is selected, the information box will contain multiple entries. Click the bullets icon ('select feature')

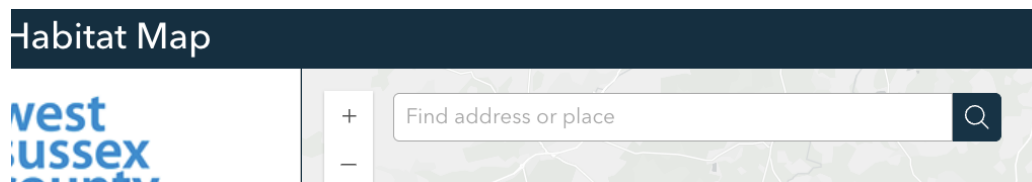


in the top right corner to show individual measures and then select one to bring up the detailed information about it. Alternatively, use the left and right arrows (top left) to navigate through different measures.

Further information about each measure can be found in Part 2 of the written LNRS. This includes local case studies, general information about *where* they could be targeted and, in some instances, how the measure relates to the Environmental Land Management Scheme (ELMS).

Finding a location

Type a postcode, address or grid reference into the bar at the top of the screen. You can also manually scroll across the map using your mouse to find a place of interest.



Zooming in or out

Scroll up (to zoom in) or down (to zoom out) on your mouse wheel. You can also use the + or - buttons in the top left-hand corner of the map. Clicking on a measure on the map also gives you the option to zoom in on the point you clicked on.

If you don't find any measures on or near your land?

All mapped measures can be found in Part 2 of the written LNRS which also contains lots of other measures that can't be mapped – either because they could be implemented in lots of locations or because we don't have enough data to say where the best locations are.

So, if you don't see any mapped measures on or near land you're interested in, check Part 2 for other actions that could be taken to support nature.

Changing the background map



The third icon in the menu allows you to change the background map. There are four options to choose from. The default setting is light grey as this enables coloured measures to be seen most clearly. You can also choose from street map, aerial imagery and topographic hillshade.

Adding a comment on the map from a desktop or laptop

Click on the fourth icon in the menu (the envelope) to add a comment about a specific area on the map. (NB this option is not available on mobile)

A smaller box will appear which also has a map. Search by location or zoom in to drop a pin onto this smaller map. The smaller map will not show measures, but you can still see these on the main map.

Below the map there are two questions and a free text box to help us understand the nature of your comment.

Let us know if you agree with something, disagree with something, would like to suggest an alternative action or have a general comment to make.

Please also let us know your relationship to the specific area you are commenting about.

Once you've added your pin, completed the questions, and pressed submit, the pin will only be visible to the LNRS team.

Add a comment

To add a comment about a location on the map, please drop a pin on the map below, and fill out the additional questions. You can also search by address, postcode, or grid reference. Once submitted, your pin and comment will only be visible to the LNRS team. There is also an opportunity to comment on the Local Habitat Map in the main consultation questionnaire [LINK].

Add a pin to the map below

Find address or place

Southampton Portsmouth Brighton and Hove

Contains OS data © Crown Copy... Powered by Esri

No geometry captured yet.

What is your relationship to the site

-Please select-

Other ways to give us feedback on the Local Habitat Map

- Via the consultation survey.
- By emailing us at WestSussexLNRS@westsussex.gov.uk (as well as your comment, please also let us know the specific area you are commenting on, and your relationship to it e.g. you are the landowner, an advisor/project manager, etc.